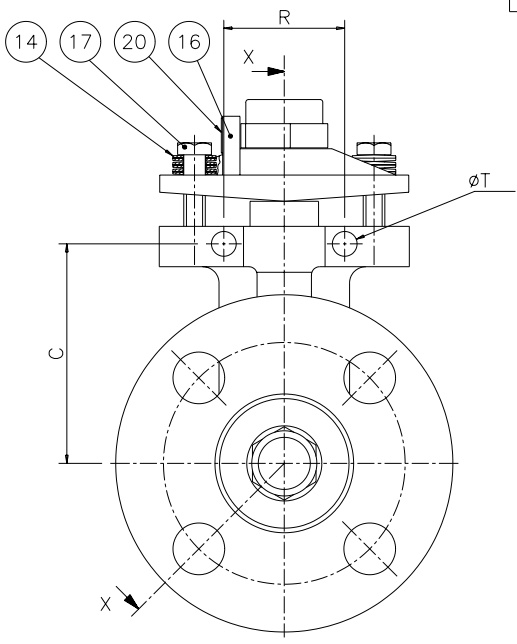
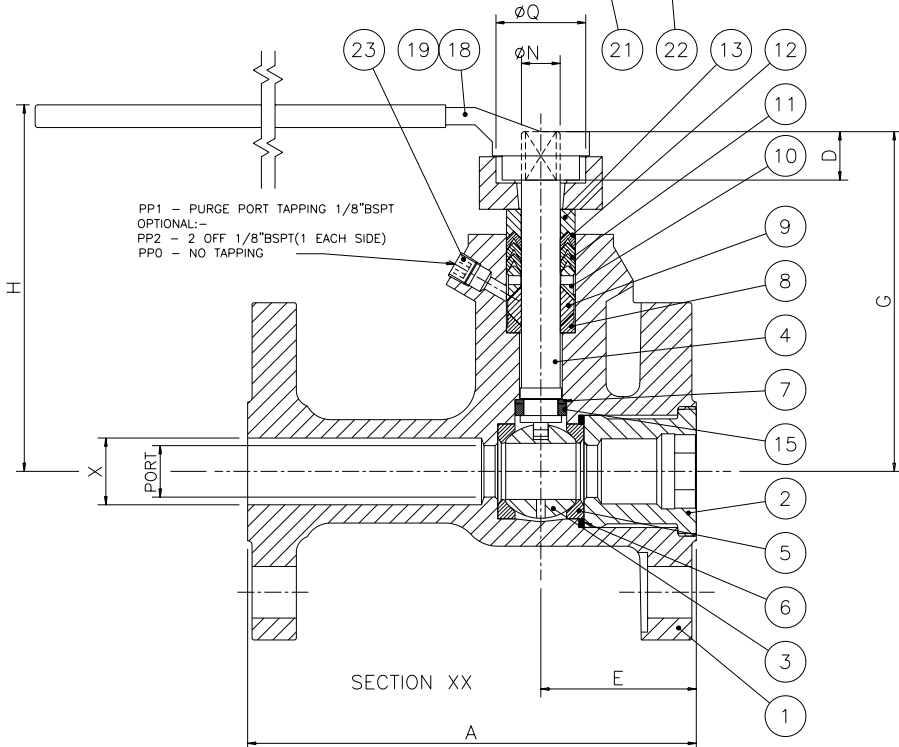
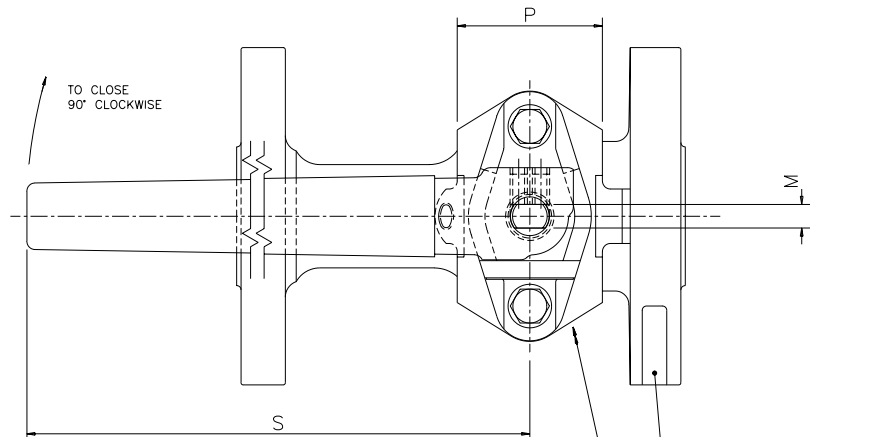


VALVE SIZE		VALVE DIMENSIONS (mm)																APPR.WEIGHT Kg		
MM	INS	PORT DIA		A		C	D	E	G	H	M MAX	N MAX	P	Q MIN	R	S	T	ØX	51	52
		51	52	51	52															
15	1/2	9.5	108.0	140.0	67.7	17.8	58.0	111.3	120.3	7.52	11.1	46.8	32.0	44.5	203.0	8.5	15.0			
20	3/4	12.5	117.0	152.0	70.1	17.8	61.3	113.5	122.4	7.52	11.1	46.8	32.0	44.5	203.0	8.5	20.0			
25	1	18.7	127.0	165.0	80.7	17.8	57.2	124.7	133.6	8.76	14.2	50.0	32.0	44.5	203.0	9.1	25.0			
40	1 1/2	30.2	165.0	190.0	97.0	17.8	62.3	143.8	156.0	12.76	19.0	70.1	32.0	57.2	254.0	11.0	40.0			
50	2	36.6	178.0	216.0	101.9	17.8	67.8	148.6	160.8	12.76	19.0	70.1	32.0	57.2	254.0	11.0	50.0			



ITEM No	DESCRIPTION	MATERIAL	QTY
1	BODY	STAINLESS STEEL ASTM A351 CF8M CARBON STEEL ASTM A352 LCC	1
2	INSERT	STAINLESS STEEL 316 CARBON STEEL ASTM 350 LF2	1
3	BALL	STAINLESS STEEL 316 HASTELLOY C ASTM B574 N10276 POLY-OND COATED STAINLESS STEEL 316	1
4	STEM	STAINLESS STEEL 316 HASTELLOY C ASTM B574 N10276	1
5	SEAT RING *	PTFE VIRGIN (T) PTFE 15% GLASS FILLED (R) FLUOROFILL (P) PEEK (A) (X) ALPHA - PTFE IMPEGNATED ST.ST 316 (N)	2
6	BODY SEAL *	PTFE VIRGIN (T)	1
7	THRUST BEARING *	CELAZOLE PBI	1
8	FILLER RING *	PTFE VIRGIN (T)	1
9	629 STEM SEAL *	PTFE VIRGIN (T)	1
10	LANTERN RING	STAINLESS STEEL 316	1
11	CHEVRON RING *	PTFE VIRGIN (T)	2
12	CHEVRON RING (A/S) *	PTFE 35% CARBON FILLED	1
13	FOLLOWER 'T'	STAINLESS STEEL 316	1
14	DISC SPRING *	STAINLESS STEEL 17/7 PH	12
15	SPLIT RING	STAINLESS STEEL 316 HASTELLOY C ASTM B574 N10276	1 PAIR
16	GLAND PLATE	STAINLESS STEEL CF8M	1
17	GLAND BOLT	ALLOY STEEL	2
18	WRENCH	DUCTILE IRON - PLATED	1
19	WRENCH SET SCREW	ALLOY STEEL	2
20	WARNING LABEL	STAINLESS STEEL 304	1
21	IDENT. PLATE	STAINLESS STEEL 304	1
22	FLANGE IDENT. PLATE	STAINLESS STEEL 304	1
23	BLANKING PLUG	STAINLESS STEEL 316	1

STANDARDS OF COMPLIANCE	
FACE TO FACE DIMENSIONS	51 SERIES BS 2080 TABLE 19 COLUMN 5 52 SERIES BS 2080 TABLE 15 COLUMN 10
FLANGE CONNECTIONS	51 SERIES BS 1560 / BS 4504 52 SERIES BS 1560 / BS 4504
PRESSURE TEST SPECIFICATION :	BS 6755 PART 1

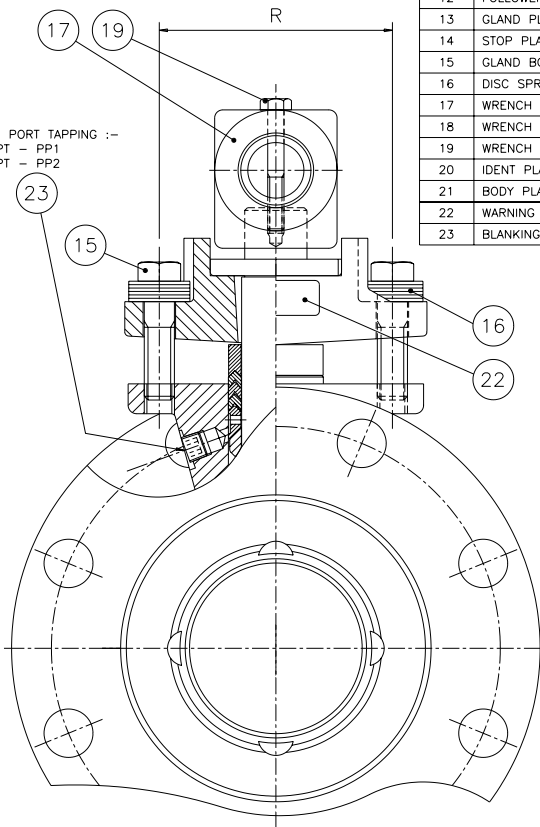
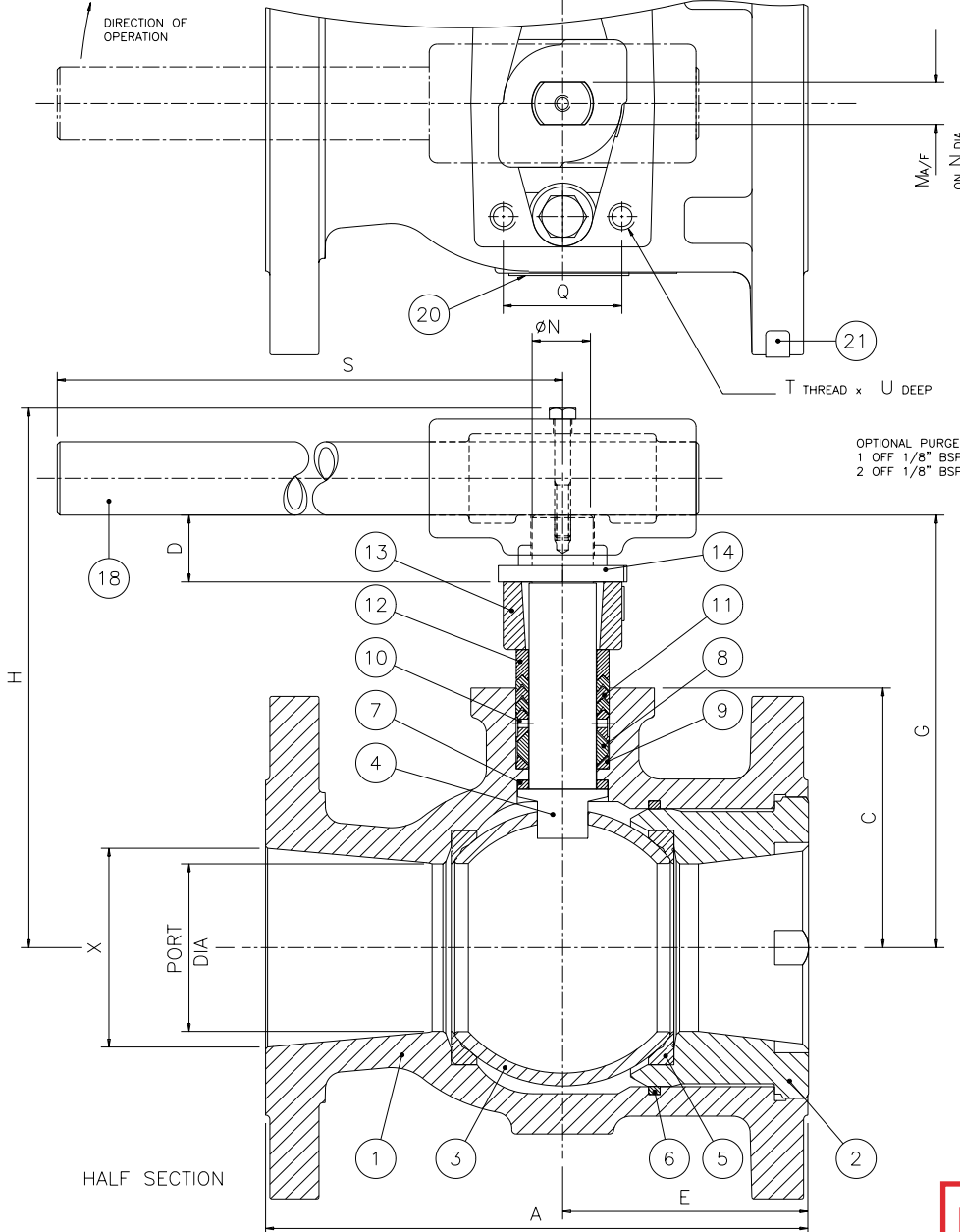
DESIGNED IN ACCORDANCE WITH BS 5351

- NOTES
- DRAWING SHOWS A 25mm VALVE WITH BS 1560 CLASS 300 FLANGES.
  - VALVE PORT : 1/2 - 1" VALVES HAVE MACHINED BORE AS SHOWN.  
1 1/2 - 2" VALVES HAVE CAST TAPERED BORE.
  - FOR ACTUATED VALVES ITEMS 18,19 ARE OMITTED.
  - FORMED BALL ON SIZES 1 1/2" TO 2".
  - REPAIR KIT :- ITEMS MARKED THUS \* DENOTE COMPONENTS SUPPLIED IN REPAIR KIT.

**E 51/52 15-50mm**

**Stainless Steel only shown**

VALVE SIZE		VALVE DIMENSIONS IN mm																	APPR WEIGHT Kg	
MM	INS	PORT DIA	A		C	D	E	G	H	M MAX	N MAX	Q	R	S	T	U	ØX	51	52	
			51	52														51	52	
80	3	63.5	203.0	283.0	98.4	25.8	91.9	162.4	201.8	15.87	23.0	44.5	85.7	350.0	M10	11.1	77.8	18.0	22.7	
100	4	82.6	229.0	305.0	113.9	25.8	101.4	178.1	217.5	15.87	23.0	44.5	85.7	558.7	M10	11.1	102.4	28.2	36.3	
150	6	111.1	267.0	403.0	157.2	35.2	107.8	231.4	287.0	23.80	35.3	76.2	101.6	850.0	M12	14.3	154.0	56.8	68.1	
200	8	144.5	292.0	419.0	184.9	35.2	144.3	258.9	314.5	23.80	35.3	76.2	101.6	850.0	M12	14.3	203.2	83.5	102.1	



ITEM No	DESCRIPTION	MATERIAL	QTY
1	BODY	STAINLESS STEEL ASTM 351 CF8M CARBON STEEL ASTM A352 LCB (0.25% C MAX)	1
2	INSERT	STAINLESS STEEL A182 F316 CARBON STEEL ASTM A532 LCB (0.25% C MAX)	1
3	BALL	STAINLESS STEEL 316 HASTELLOY C ASTM B574 N10276	1
4	STEM	STAINLESS STEEL 316 HASTELLOY C ASTM B574 N10276	1
5	SEAT RING	* PTFE VIRGIN PTFE 15% GLASS FILLED PEEK POLYFILL REINFORCED METAL GRAPHITE IMPREGNATED ST. STEEL) METAL (PTFE IMPREGNATED ST. STEEL)	T R A/X P G N
6	BODY SEAL	* VIRGIN PTFE (T)	1
7	THRUST BEARING	* PTFE 25% GLASS FILLED	1
8	629 SEAL	* VIRGIN PTFE (T)	1
9	FILLER RING	* VIRGIN PTFE (T)	1
10	LANTERN RING	STAINLESS STEEL 316 HASTELLOY C ASTM B574 N10276	1
11	CHEVRON RING	* VIRGIN PTFE (T)	3
12	FOLLOWER 'T'	STAINLESS STEEL 316	1
13	GLAND PLATE	STAINLESS STEEL CF8M	1
14	STOP PLATE	CARBON STEEL RUSTPROOFED	1
15	GLAND BOLT	STAINLESS STEEL 316	2
16	DISC SPRING	STAINLESS STEEL	12
17	WRENCH HEAD	CARBON STEEL RUSTPROOFED	1
18	WRENCH HANDLE	CARBON STEEL RUSTPROOFED	1
19	WRENCH BOLT	CARBON STEEL RUSTPROOFED	1
20	IDENT PLATE	STAINLESS STEEL 304	1
21	BODY PLATE	STAINLESS STEEL 304	1
22	WARNING LABEL	STAINLESS STEEL 304	1
23	BLANKING PLUG	STAINLESS STEEL 316	1 PER P/PORT

STANDARDS OF COMPLIANCE	
DESIGNED IN ACCORDANCE WITH	BS 5351
FACE TO FACE DIMENSIONS	51 SERIES BS 2080 TABLE 19 COLUMN 5 52 SERIES BS 2080 TABLE 15 COLUMN 10
FLANGE CONNECTIONS	51 SERIES BS 1560 / BS 4504 / BS 10 52 SERIES BS 1560 / BS 4504 / BS 10
PRESSURE TEST SPECIFICATION TO :	BS 6755 PART 1
FIRE TEST SPECIFICATION :	BS 6755 PART 2

- NOTES
- DRAWING SHOWS A 80mm VALVE WITH BS 1560 CLASS 150 FLANGES.
  - FOR ACTUATED VALVES ITEMS 14,17,18 & 19.
  - REPAIR KIT :- ITEMS MARKED THUS \* DENOTE COMPONENTS SUPPLIED IN REPAIR KIT.
  - ADDITIONAL HOLE IN WRENCH ALLOWS WRENCH HANDLE TO BE FITTED IN MID POSITION.
  - VALVE STEM ASSEMBLY IS SHOWN IN NON-COMPRESSED CONDITION.

**EF 51/52 80-200mm**

**Stainless Steel only shown**