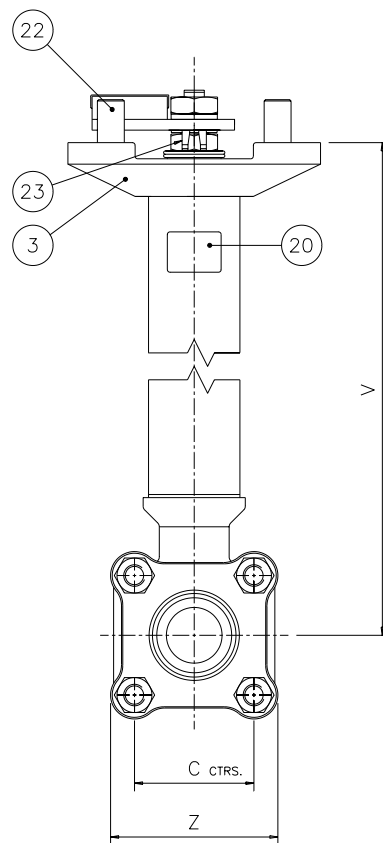
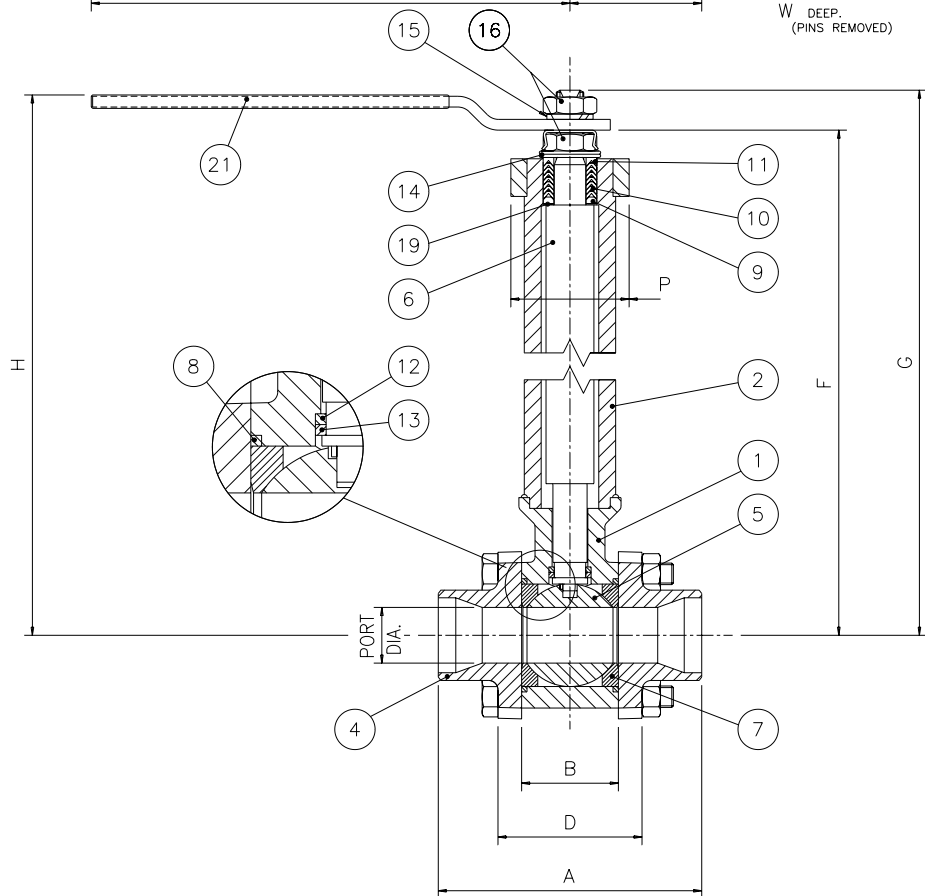
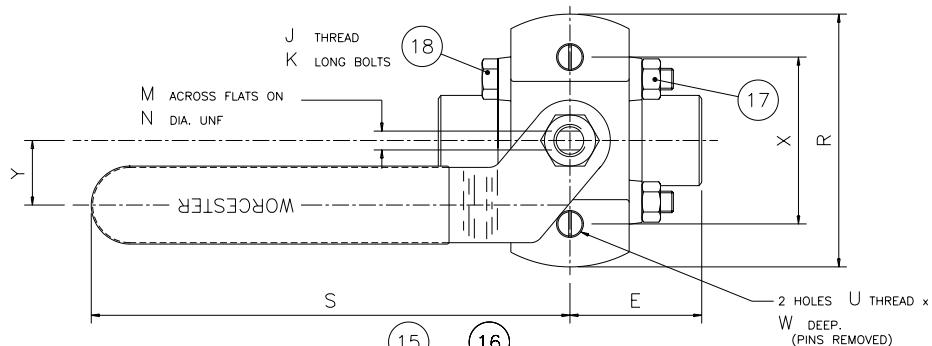


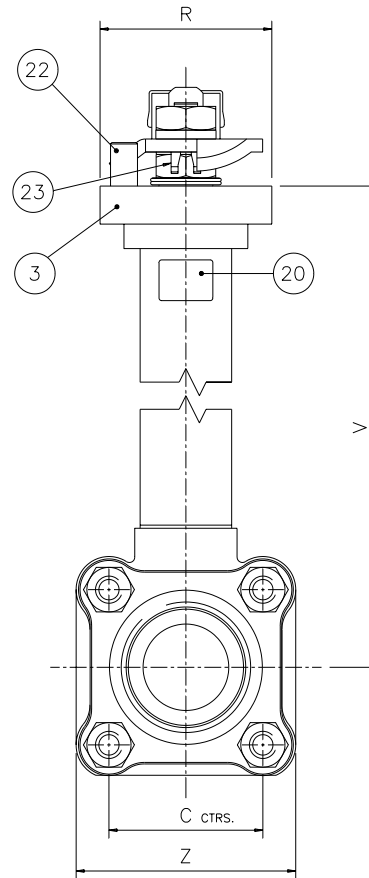
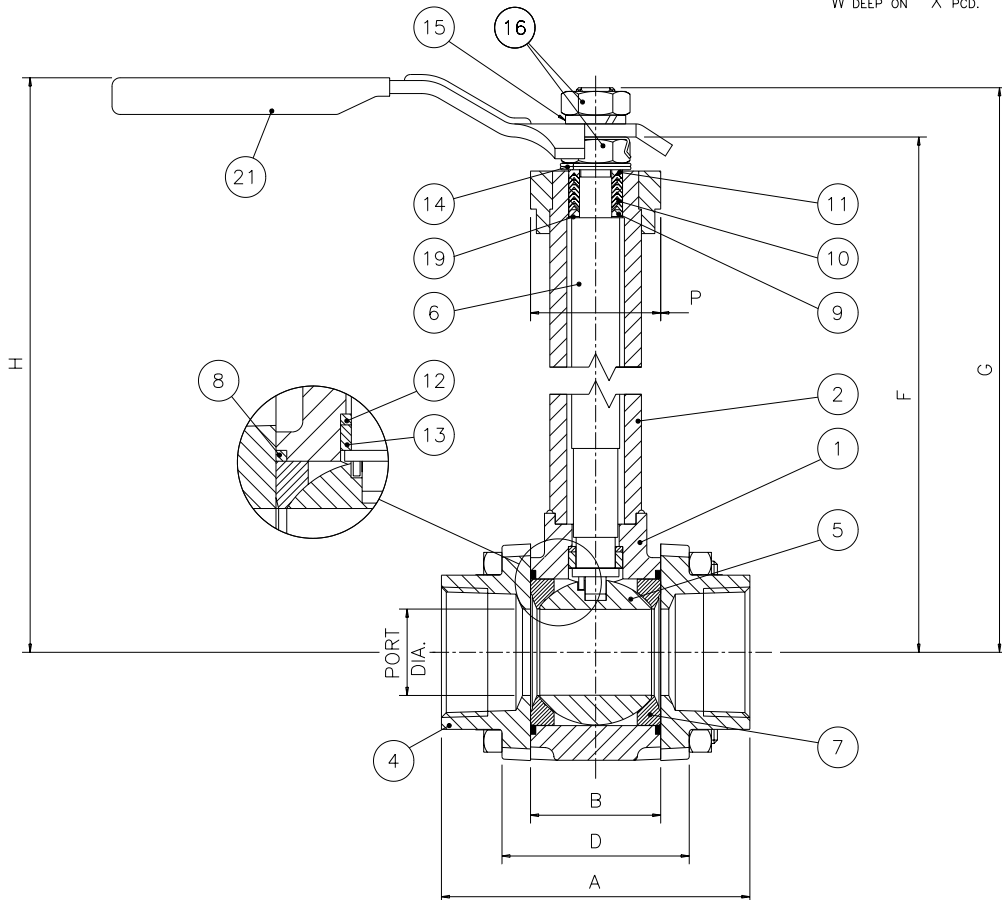
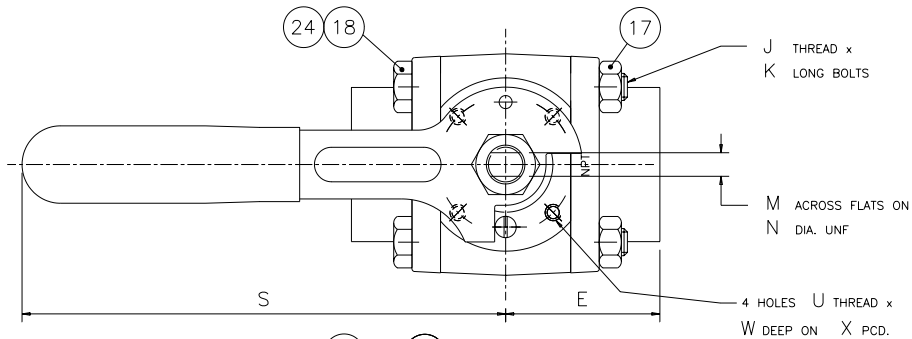
VALVE SIZE		VALVE DIMENSIONS (mm)																				APPROX MASS. Kg		
MM	INS	PORT DIA	A ±0.8	B ±0.07	C	D ±0.8	E ±0.4	F ±0.25	G ±0.25	H ±0.8	J	K	M ±0.04	N	P	R	S	U	V	W	X		Y	Z ±0.8
15	1/2	11.1	65.4	20.58	31.8	31.8	32.7	184.21	199.64	199.9	M6	40.0	7.50	7/16-20	38.1	78.8	165.1	M6	175.8	9.5	63.5	21.1	47.6	1.4
20	3/4	14.3	71.0	24.55	38.1	37.4	35.5	186.75	202.18	202.5	M6	45.0	7.50	7/16-20	38.1	78.8	165.1	M6	178.3	9.5	63.5	21.1	54.4	1.6
25	1	20.6	93.7	31.69	44.5	49.3	46.9	210.88	226.31	227.1	M8	60.0	7.50	7/16-20	38.1	78.8	165.1	M6	202.5	9.7	63.5	21.1	65.4	2.3



ITEM NO.	DESCRIPTION	MATERIAL	QTY.
1	BODY	STAINLESS STEEL ASTM A351-CF3M BRASS ASTM B283 C37700	1
2	EXTENSION	STAINLESS STEEL ASTM A312-316L	1
3	BONNET PLATE	STAINLESS STEEL ASTM A743-CF3M	1
4	PIPE END	STAINLESS STEEL ASTM A351-CF8M BRASS BS2872 C2122	1
5	BALL	STAINLESS STEEL ASTM A479-316 COND. A BRASS ASTM B16 H02 CHROME PLATED	1
6	STEM ASSEMBLY	STAINLESS STEEL ASTM A479-316 COND. A	1
7	SEAT	POLYFILL	2
8	BODY SEAL	STAINLESS STEEL AISI 316 / TFE COATED	2
9	PACKING FOLLOWER (BOTTOM)	STAINLESS STEEL ASTM A479-316L	1
10	PACKING RING	CRANE CHEMLON V-RING / TEFLON	3
11	PACKING FOLLOWER (TOP)	STAINLESS STEEL ASTM A479-316L	1
12	SPLIT THRUST BEARING	PBI CELAZOLE U-60 (1/2" & 3/4" VALVE) POLYFILL (1" VALVE)	1
13	SPLIT RING (HALVES)	STAINLESS STEEL ASTM A479-316L	2
14	BELLEVILLE WASHER	STAINLESS STEEL AISI 301	2
15	SPRING WASHER	STAINLESS STEEL AISI 300 SERIES	1
16	STEM & HANDLE NUT	STAINLESS STEEL AISI 300 SERIES / ZINC PLATED	2
17	BODY NUT	STAINLESS STEEL ASTM A194 GR.8	4
18	BODY BOLT	STAINLESS STEEL ASTM A193 GR.88 ENP	4
19	THRUST BEARING	PEEK	2
20	NAMEPLATE	STAINLESS STEEL AISI 304	1
21	HANDLE ASSEMBLY	STAINLESS STEEL AISI 300 SERIES / VINYL COATED	1
22	STOP PIN	STAINLESS STEEL AISI 300 SERIES	2
23	LOCKING CLIP	CARBON STEEL PLATED	1

C44 15-25mm

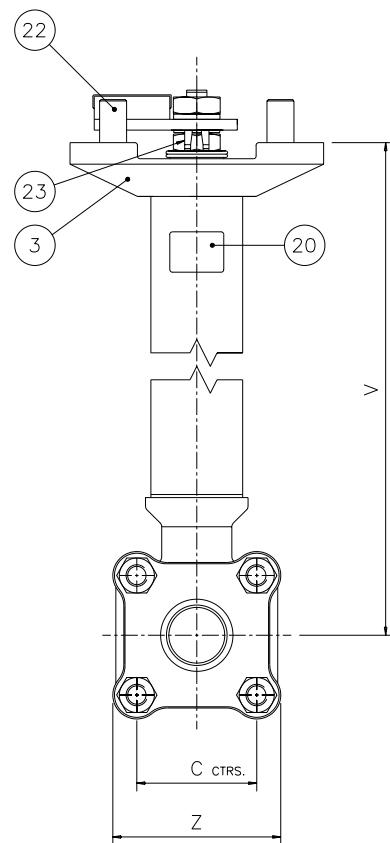
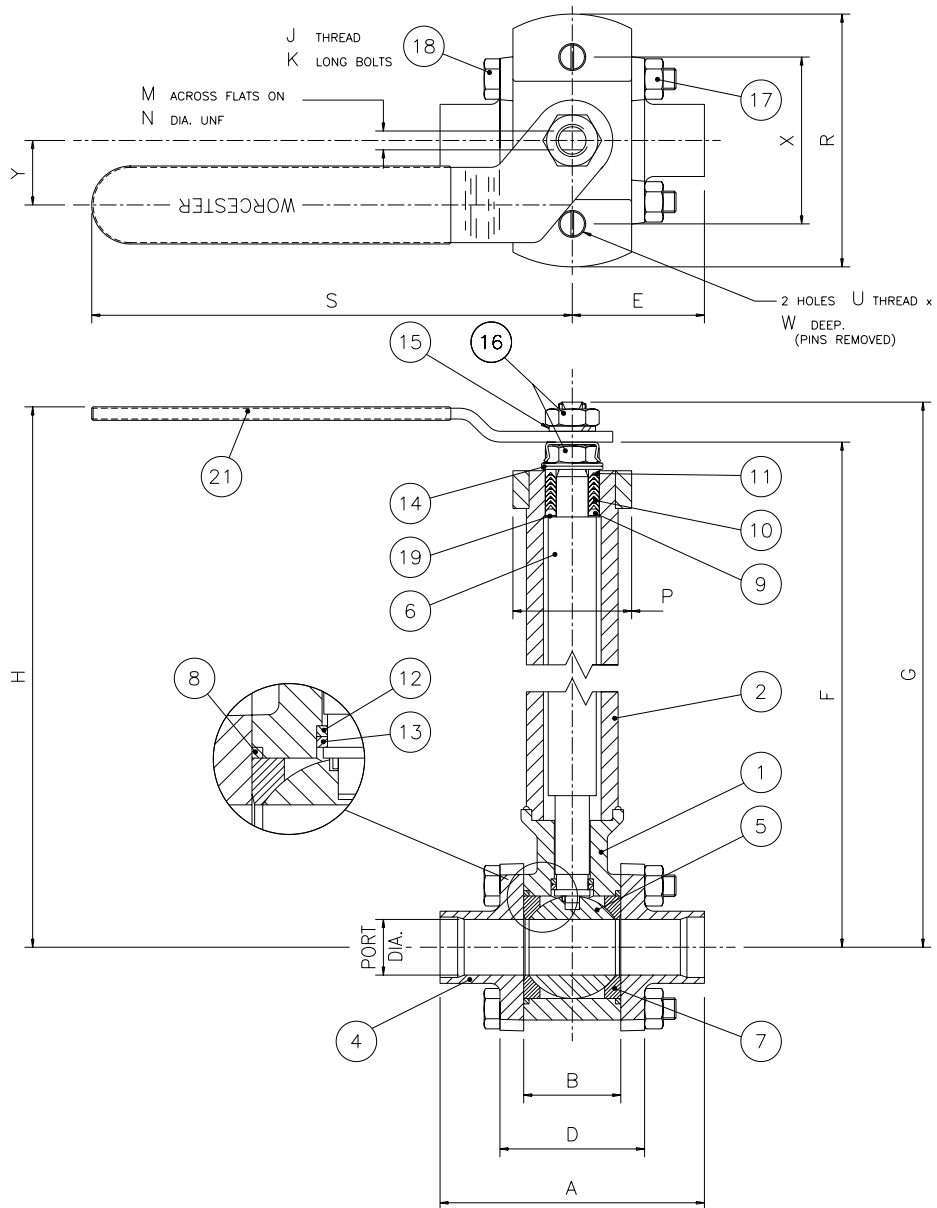
VALVE SIZE		VALVE DIMENSIONS (mm)																				APPROX MASS. Kg	
		PORT DIA	A	B	C	D	E	F	G	H	J	K	M	N	P	R	S	U	V	W	X		Z
MM	INS		±0.8	±0.07		±0.8	±0.4	±0.25	±0.25	±0.8		±0.04											
40	1 1/2	31.8	114.6	48.35	57.2	69.6	57.3	241.83	259.84	264.8	M10	80.0	8.67	9/16-18	49.28	63.5	181.0	M6	230.9	8.7	50.0	80.3	5.0
50	2	38.1	127.1	56.28	66.7	79.1	63.6	246.40	264.41	269.4	M10	90.0	8.67	9/16-18	49.28	63.5	181.0	M6	235.5	8.7	50.0	90.4	5.9



ITEM NO.	DESCRIPTION	MATERIAL	QTY.
1	BODY	STAINLESS STEEL ASTM A351-CF3M BRASS ASTN B283 C37700	1
2	EXTENSION	STAINLESS STEEL ASTM A312-316L	1
3	BONNET PLATE	STAINLESS STEEL ASTM A743-CF3M	1
4	PIPE END	STAINLESS STEEL ASTM A351-CF8M BRASS BS2872 CZ122	1
5	BALL	ST. STL. ASTM A479-316 COND. A BRASS ASTM B16 H02 CHROME PLATED	1
6	STEM ASSEMBLY	STAINLESS STEEL ASTM A479-316 COND. A	1
7	SEAT	POLYFILL	2
8	BODY SEAL	STAINLESS STEEL AISI 316 / TFE COATED	2
9	PACKING FOLLOWER (BOTTOM)	STAINLESS STEEL ASTM A479-316L	1
10	PACKING RING	CRANE CHEMLON V-RING / TEFLON	3
11	PACKING FOLLOWER (TOP)	STAINLESS STEEL ASTM A479-316L	1
12	SPLIT THRUST BEARING	POLYFILL	1
13	SPLIT RING (HALVES)	STAINLESS STEEL ASTM A479-316L	2
14	BELLEVILLE WASHER	STAINLESS STEEL AISI 301	2
15	SPRING WASHER	STAINLESS STEEL AISI 300 SERIES	1
16	STEM & HANDLE NUT	STAINLESS STEEL AISI 300 SERIES / ZINC PLATED	2
17	BODY NUT	STEEL STEEL ASTM A194 GR.8	4
18	BODY BOLT	STEEL STEEL ASTM A193 GR.B8 / ENP	4
19	THRUST BEARING	PEEK	2
20	NAMEPLATE	STAINLESS STEEL AISI 304	1
21	WRENCH/SLEEVE ASSEMBLY	STAINLESS STEEL AISI 300 SERIES / VINYL COATED	1
22	STOP PIN	STAINLESS STEEL AISI 300 SERIES	1
23	LOCKING CLIP	CARBON STEEL PLATED	1
24	SPACER (2" VALVE ONLY)	STAINLESS STEEL AISI 300 SERIES	4

C44 40-50mm

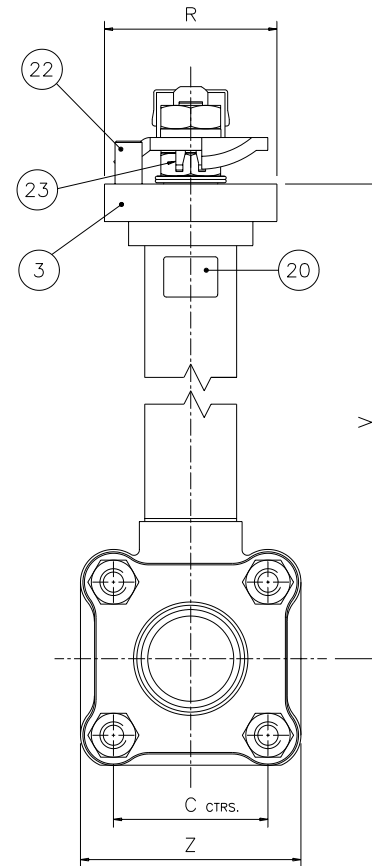
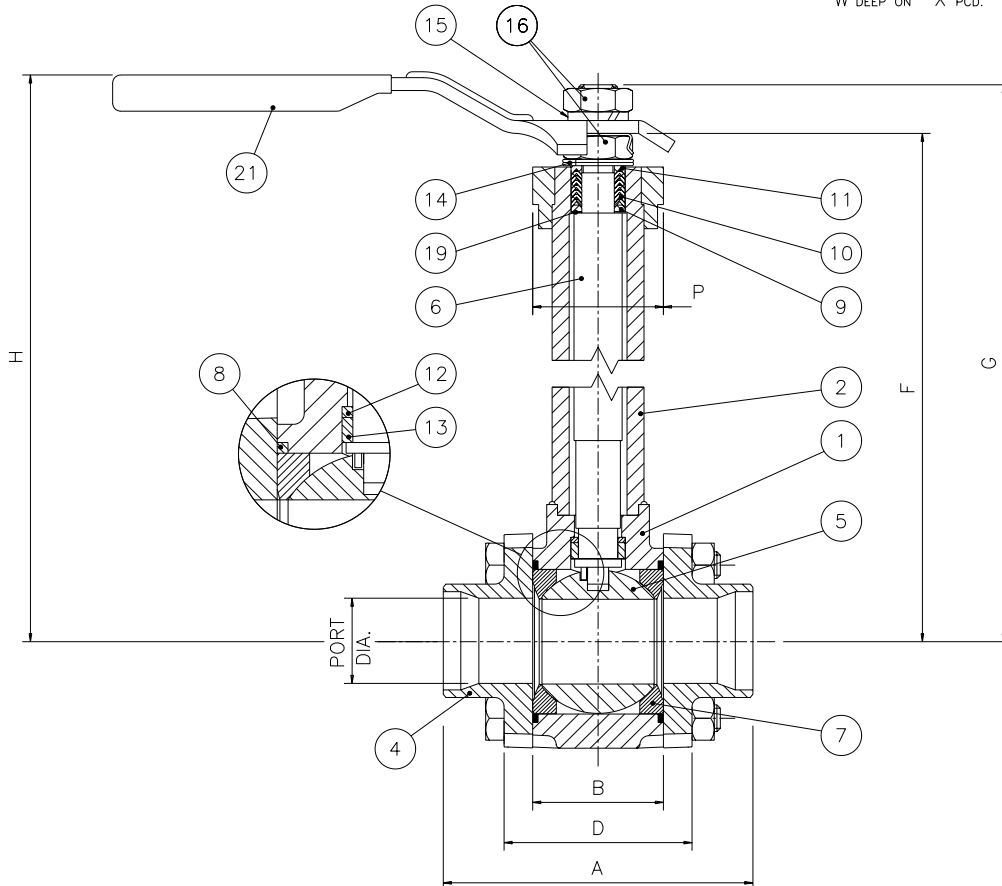
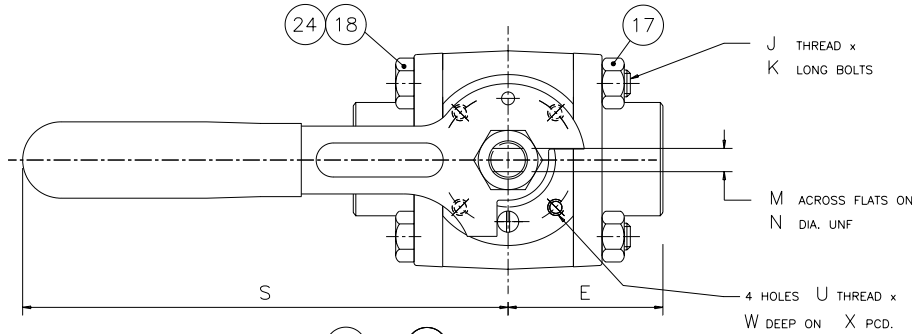
VALVE SIZE		VALVE DIMENSIONS (mm)																				APPROX MASS. Kg		
MM	INS	PORT DIA	A	B	C	D	E	F	G	H	J	K	M	N	P	R	S	U	V	W	X		Y	Z
15	1/2	14.3	71.0	24.55	38.1	37.4	35.5	186.75	202.18	202.5	M6	45.0	7.50	7/16-20	38.1	78.8	165.1	M6	178.3	9.5	63.5	21.1	54.4	1.6
20	3/4	20.6	93.7	31.69	44.5	49.3	46.9	210.88	226.31	227.1	M8	60.0	7.50	7/16-20	38.1	78.8	165.1	M6	202.5	9.7	63.5	21.1	65.4	2.3



ITEM NO.	DESCRIPTION	MATERIAL	QTY.
1	BODY	STAINLESS STEEL ASTM A351-CF3M BRASS ASTM B283 C37700	1
2	EXTENSION	STAINLESS STEEL ASTM A312-316L	1
3	BONNET PLATE	STAINLESS STEEL ASTM A743-CF3M	1
4	PIPE END	STAINLESS STEEL ASTM A351-CF8M BRASS BS2872 CZ122	1
5	BALL	STAINLESS STEEL ASTM A479-316 COND. A BRASS ASTM B16 H02 CHROME PLATED	1
6	STEM ASSEMBLY	STAINLESS STEEL ASTM A479-316 COND. A	1
7	SEAT	POLYFILL	2
8	BODY SEAL	STAINLESS STEEL AISI 316 / TFE COATED	2
9	PACKING FOLLOWER (BOTTOM)	STAINLESS STEEL ASTM A479-316L	1
10	PACKING RING	CRANE CHEMLON V-RING / TEFLON	3
11	PACKING FOLLOWER (TOP)	STAINLESS STEEL ASTM A479-316L	1
12	SPLIT THRUST BEARING	PBI CELAZOLE U-60 (1/2" & 3/4" VALVE) POLYFILL (1" VALVE)	1
13	SPLIT RING (HALVES)	STAINLESS STEEL ASTM A479-316L	2
14	BELLEVILLE WASHER	STAINLESS STEEL AISI 301	2
15	SPRING WASHER	STAINLESS STEEL AISI 300 SERIES	1
16	STEM & HANDLE NUT	STAINLESS STEEL AISI 300 SERIES / ZINC PLATED	2
17	BODY NUT	STAINLESS STEEL ASTM A194 GR.8	4
18	BODY BOLT	STAINLESS STEEL ASTM A193 GR.B8 ENP	4
19	THRUST BEARING	PEEK	2
20	NAMEPLATE	STAINLESS STEEL AISI 304	1
21	HANDLE ASSEMBLY	STAINLESS STEEL AISI 300 SERIES / VINYL COATED	1
22	STOP PIN	STAINLESS STEEL AISI 300 SERIES	2
23	LOCKING CLIP	CARBON STEEL PLATED	1

C59 15-20mm

VALVE SIZE		VALVE DIMENSIONS (mm)																			APPROX MASS. Kg		
MM	INS	PORT DIA	A	B	C	D	E	F	G	H	J	K	M	N	P	R	S	U	V	W		X	Z
25	1	25.4	114.6	48.35	57.2	69.6	57.3	241.83	259.84	264.8	M10	80.0	8.67	9/16-18	49.28	63.5	181.0	M6	230.9	8.7	50.0	80.3	5.0
32	1 1/4	31.8	114.6	48.35	57.2	69.6	57.3	241.83	259.84	264.8	M10	80.0	8.67	9/16-18	49.28	63.5	181.0	M6	230.9	8.7	50.0	80.3	5.0
40	1 1/2	38.1	127.1	56.28	66.7	79.1	63.6	246.40	264.41	269.4	M10	90.0	8.67	9/16-18	49.28	63.5	181.0	M6	235.5	8.7	50.0	90.4	5.9



ITEM NO.	DESCRIPTION	MATERIAL	QTY.
1	BODY	STAINLESS STEEL ASTM A351-CF3M BRASS ASTM B283 C37700	1
2	EXTENSION	STAINLESS STEEL ASTM A312-316L	1
3	BONNET PLATE	STAINLESS STEEL ASTM A743-CF3M	1
4	PIPE END	STAINLESS STEEL ASTM A351-CF8M BRASS B52872 CZ122	1
5	BALL	ST. STL. ASTM A479-316 COND. A BRASS ASTM B16 H02 CHROME PLATED	1
6	STEM ASSEMBLY	STAINLESS STEEL ASTM A479-316 COND. A	1
7	SEAT	POLYFILL	2
8	BODY SEAL	STAINLESS STEEL AISI 316 / TFE COATED	2
9	PACKING FOLLOWER (BOTTOM)	STAINLESS STEEL ASTM A479-316L	1
10	PACKING RING	CRANE CHEMLON V-RING / TEFLON	3
11	PACKING FOLLOWER (TOP)	STAINLESS STEEL ASTM A479-316L	1
12	SPLIT THRUST BEARING	POLYFILL	1
13	SPLIT RING (HALVES)	STAINLESS STEEL ASTM A479-316L	2
14	BELLEVILLE WASHER	STAINLESS STEEL AISI 301	2
15	SPRING WASHER	STAINLESS STEEL AISI 300 SERIES	1
16	STEM & HANDLE NUT	STAINLESS STEEL AISI 300 SERIES / ZINC PLATED	2
17	BODY NUT	STEEL ASTM A194 GR.8	4
18	BODY BOLT	STEEL ASTM A193 GR.B8 / ENP	4
19	THRUST BEARING	PEEK	2
20	NAMEPLATE	STAINLESS STEEL AISI 304	1
21	WRENCH/SLEEVE ASSEMBLY	STAINLESS STEEL AISI 300 SERIES / VINYL COATED	1
22	STOP PIN	STAINLESS STEEL AISI 300 SERIES	1
23	LOCKING CLIP	CARBON STEEL PLATED	1
24	SPACER (2" VALVE ONLY)	STAINLESS STEEL AISI 300 SERIES	4

NOTES:
1. 25mm (1") VALVE ONLY AVAILABLE WITH SOCKET WELD AND SCREWED END CONNECTORS.

C59 25-40mm